



MOVE
FORWARD
WITH US ▶▶

CONVEYORS • MODULAR BELTS • SLAT CHAINS • ENGINEERING PLASTICS



"ONE STOP SOLUTION FOR ALL **CONVEYOR** **COMPONENTS**

With the expertise, **TEAM SPECTRUM** is moving towards its vision "ONE STOP SOLUTION FOR ALL CONVEYOR COMPONENTS" addressing the conveyor manufacturers / machine builders / System integrators and End use industries in the US and Canadian market.



OUR INFRASTRUCTURE



PLASTIC SLAT CHAIN



►► Features

- Advanced polymers for Low friction and longer life.
- Product friendly designs for better handling.
- Cleaner & Safer environment through sustainable engineering solutions.
- Abrasion resistant chains for demanding environment.

►► Industry



Beverage



Pharmaceutical



Packaged water



Food packaging

STAINLESS STEEL SLAT CHAIN



►► Features

- Excellent Flatness and surface finish.
- High wear resistant chains with less elongation.
- Polishes hinge eye for smooth product handling.
- Chamfered edges for efficiency and durability.

►► Industry



Distilleries



Breweries

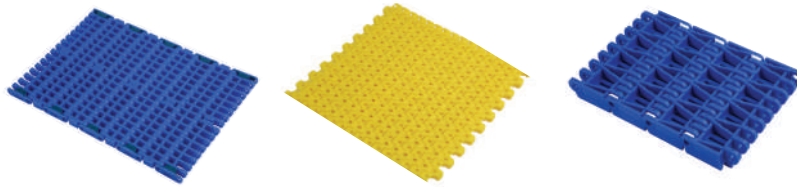


Dairy



Bottling

MODULAR BELTS



►► Features

- Raw materials sourced from DuPont & Ticona to meet global standards.
- Direct food contact Modular belts with FDA compliance.
- Rubber Top and Low Back Pressure chains for efficient product handling.
- Positive tracking mechanism to avoid belt jumping.

►► Industry



Bakery



Food



Packaging



Meat and sea food

CONVEYOR COMPONENTS

Our customer can choose from an extensive range of conveyor components and accessories that include supporting and levelling elements, Drive and driven sprockets, Product handling, Corner tracks, Bearing blocks to suit their application.



WEAR STRIPS

Largest manufacturers of UHMWPE wear strips and chain guide in the country.

We are capable of drawing complex profiles with consistent material properties.

Decades of expertise in conveyors has evolved us in providing customised solutions through our professionals.

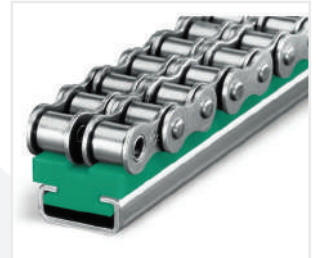
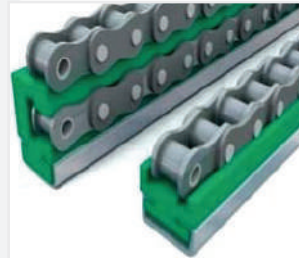
We source Ticona's GUR Materials (UHMWPE) which has 9.2million in molecular weight.



CHAIN GUIDES

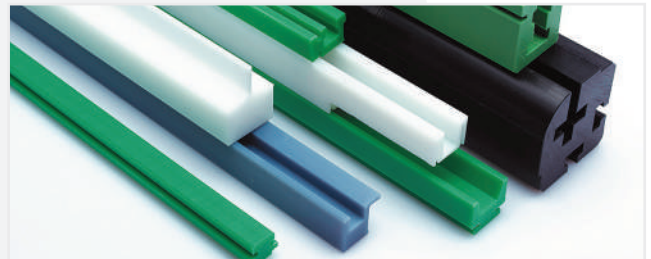
Chain guide for Simplex, Duplex and triplex roller chains with metallic supports in Galvanized and stainless steel.

Belt guides for V-belt, Flat belt, ropes and timing belt.



ENGINEERED PLASTIC

One of the largest converters of semi finished Engineering plastics





SPECTRUM PLASTIC MODULAR BELTING

Unit #106 - 7880 66 Street S.E., Calgary, Alberta Canada T2C 5V2

STEVE HURLEY

Calgary Warehouse
Unit #106 - 7880 66 Street S.E.,
Calgary, Alberta Canada T2C 5V2
403 - 616 - 1870

DON GILLIES

Barrie Warehouse
352 King Street
Barrie, Ontario Canada L4N 6B5
905 - 251 - 2125

website : <http://spectrummodularbelt.com/>

